



Road Safety Audits

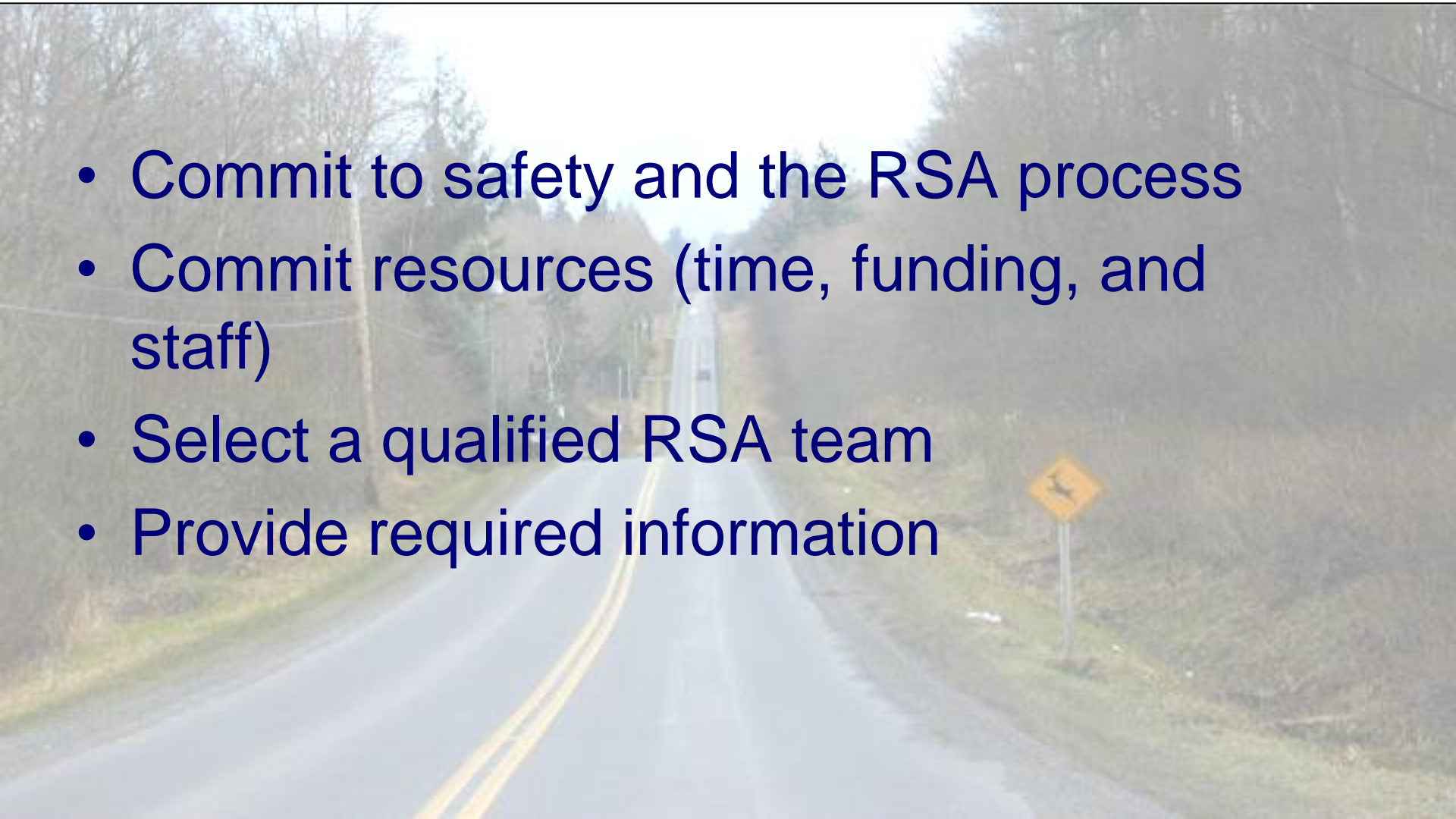


Common Issues and Challenges

Common Issues and Challenges

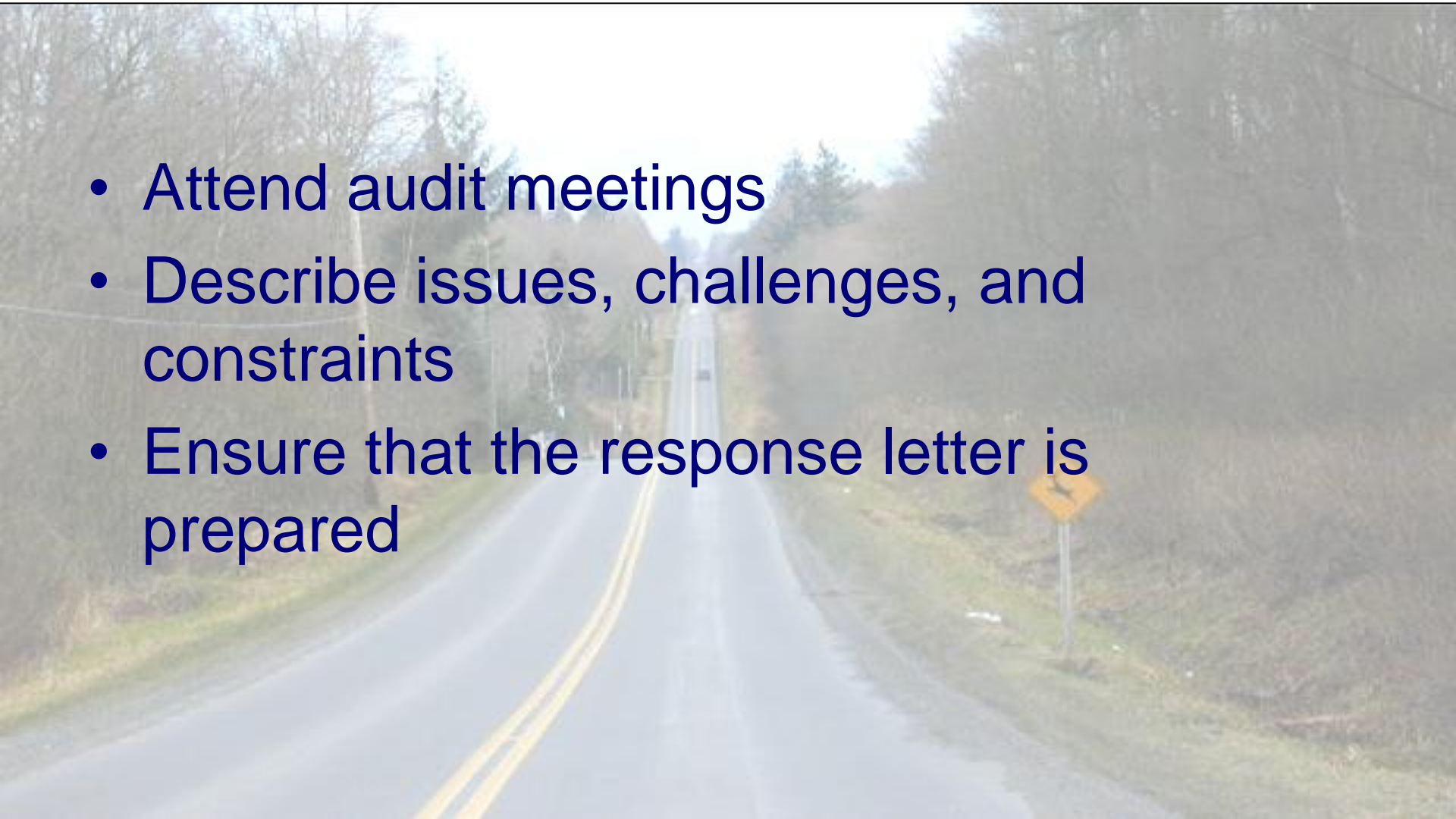
- responsibilities
- programming and scheduling
- effects on project costs
- legal liability
- management of expectations
- resources and references

RSA Responsibilities: Local Road Agency

- Commit to safety and the RSA process
 - Commit resources (time, funding, and staff)
 - Select a qualified RSA team
 - Provide required information
- 
- A photograph of a two-lane road with double yellow lines, surrounded by trees and a yellow diamond-shaped warning sign on the right side. The road is paved and curves slightly to the right. The background shows a line of trees under a bright sky. The overall image has a semi-transparent overlay for the text.

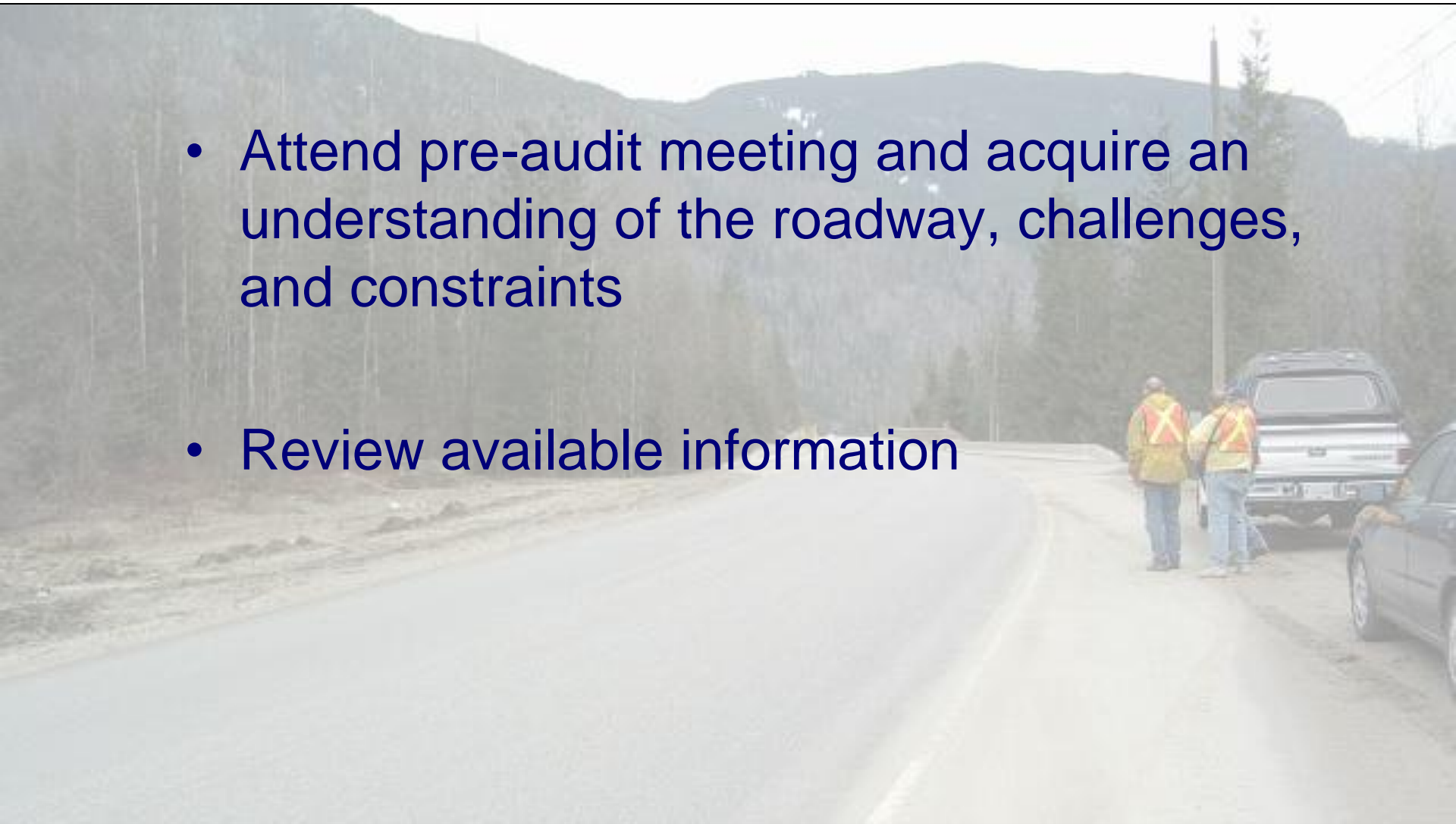
RSA Responsibilities: Local Road Agency

- Attend audit meetings
- Describe issues, challenges, and constraints
- Ensure that the response letter is prepared



RSA Responsibilities: Audit Team

- Attend pre-audit meeting and acquire an understanding of the roadway, challenges, and constraints
- Review available information



RSA Responsibilities: Audit Team

- Conduct field review
- Identify safety issues
- Identify feasible suggestions for mitigation
- Present preliminary findings at post-audit meeting



*Pre-construction audits:
Will an RSA delay the project?*



- RSAs require a relatively short time.
- Pre-construction RSAs can occur concurrently with the agency's review of the design drawings.

*Pre- and post-construction
audits:
Will an RSA drive up costs?*

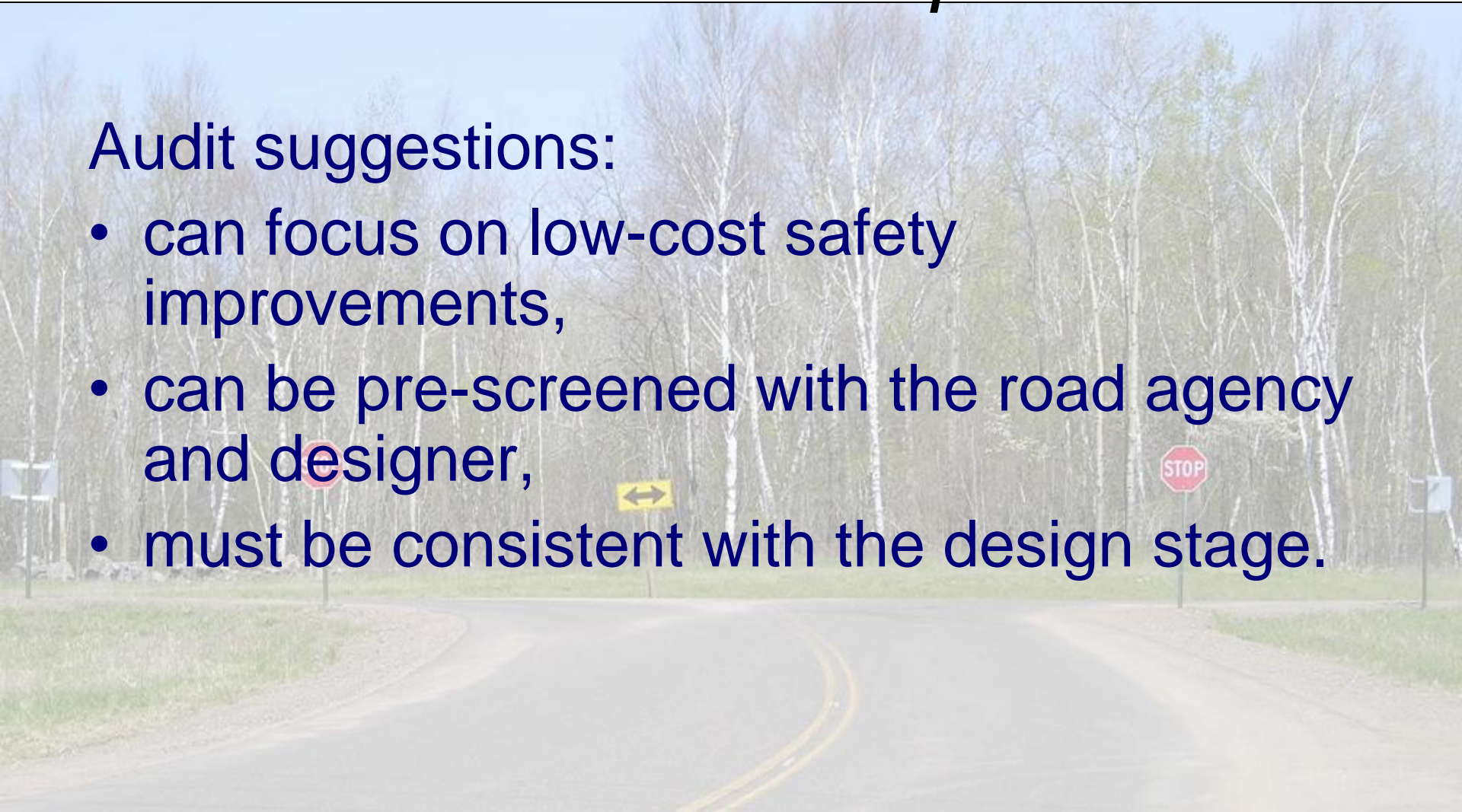
The audit team provides suggestions only.
The road agency or designer remains
responsible for design decisions.



Pre- and post-construction audits: Will an RSA drive up costs?

Audit suggestions:

- can focus on low-cost safety improvements,
- can be pre-screened with the road agency and designer,
- must be consistent with the design stage.



Do RSAs expose agencies to more Risk?

- Agencies should seek legal advice.
- Agencies can be taken to court with or without a road safety audit.
- RSAs can be part of a safety management system.



Do RSAs expose agencies to more risk?

Auditors must carefully complete the RSA to a reasonable standard of care and professionalism.

- *identify RSA scope*
- *identify RSA materials*
- *identify limitations*
- *consult during audit*

Do RSAs expose agencies to more risky?

“[RSAs] demonstrate a proactive approach to identifying and mitigating safety concerns.”

“Our attorneys say that once safety issues are identified, and if we have financial limitations on how much and how fast we can correct the issues, then the audit will help us in managing risk.”

Using Relative Risk to Prioritize Safety Issues

RISK CATEGORY		SEVERITY			
		Negligible	Low	Med	High
Accident Frequency Category	Frequent	C	D	E	F
	Occasional	B	C	D	E
	Infrequent	A	B	C	D
	Rare	A	A	B	C

End of Part 3: Common Issues and Challenges

