

Goals & Objectives for Collaborative Youth Programming

**CENY NETWORKING LUNCHEON
JUNE 20, 2013**

- Defining Goals and Objectives
- Defining Interoperability
- Partnering with purpose

OVERVIEW

- A goal is the result or achievement toward which effort is directed; aim; end.

DEFINITION OF GOAL

- An objective is something that one's efforts or actions are intended to attain or accomplish; purpose; **goal**; target: the objective of a military attack; the objective of a fund-raising drive.

DEFINITION OF OBJECTIVE

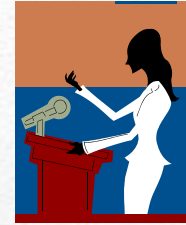
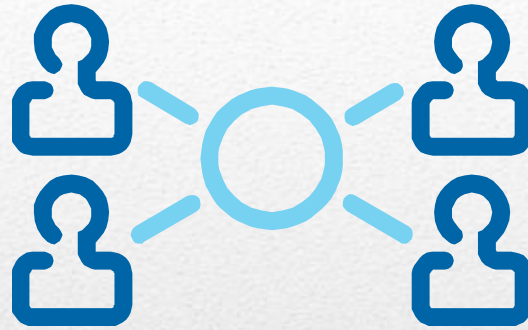


What? Are they really the same?

- **Goals** are general guidelines that explain what you want to achieve in your community. They are usually long-term and represent global visions such as “protect public health and safety.”
- **Objectives** define strategies or implementation steps to attain the identified goals. Unlike goals, objectives are specific, measurable, and have a defined completion date. They are more specific and outline the “who, what, when, where, and how” of reaching the goals.
- Plans and actions based on clear goals and objectives are more likely to succeed in meeting the community’s needs.

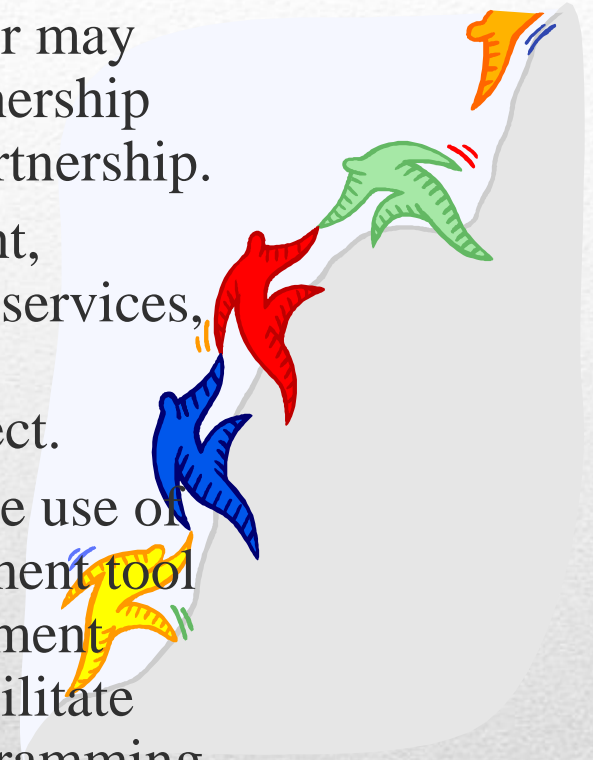


GOALS DIFFER FROM OBJECTIVES




Interoperability is the ability of diverse systems and organizations to work together.

- Assembling all the partners you can hope for may still not help to achieve your goal. The partnership must focus on what is achievable by that partnership.
- Interoperation can occur in data management, technology, facilities, administration, direct services, marketing and other areas where tribal/agency/organizational interests intersect.
- One example of interoperations would be the use of a common risk and protective factor assessment tool with tribal youth and common data management infrastructure across tribes in a region to facilitate the development of inter-jurisdictional programming tailored to youth needs.



WHAT CAN YOUR PARTNERSHIP ACHIEVE?

Vision and Purpose




Sonoma County

CRADLE TO CAREER

OUR VISION: Strong Families... Successful Students... World-class Workforce... Thriving Economy... Healthy Community.

Cradle to Career is a historic partnership that connects all segments of the educational continuum – early childhood, K-12, college/technical training, careers – with broad community support to improve the educational, economic, and health outcomes for all Sonoma County youth.



GROW THE SOLUTION!

EXAMPLE: Cradle to Career

Define areas of Inter- operability



CRADLE TO CAREER

We must come together as a community to address barriers and challenges to educational attainment and workforce development. Students who get off to a strong educational start are more likely to graduate from high school, to earn more money over a lifetime, have better health outcomes, and are better able to contribute to the economic, social and cultural life of the community.

It is critical that every child in Sonoma County has ample opportunities to succeed and achieve their life potential.



How will we achieve our Vision?

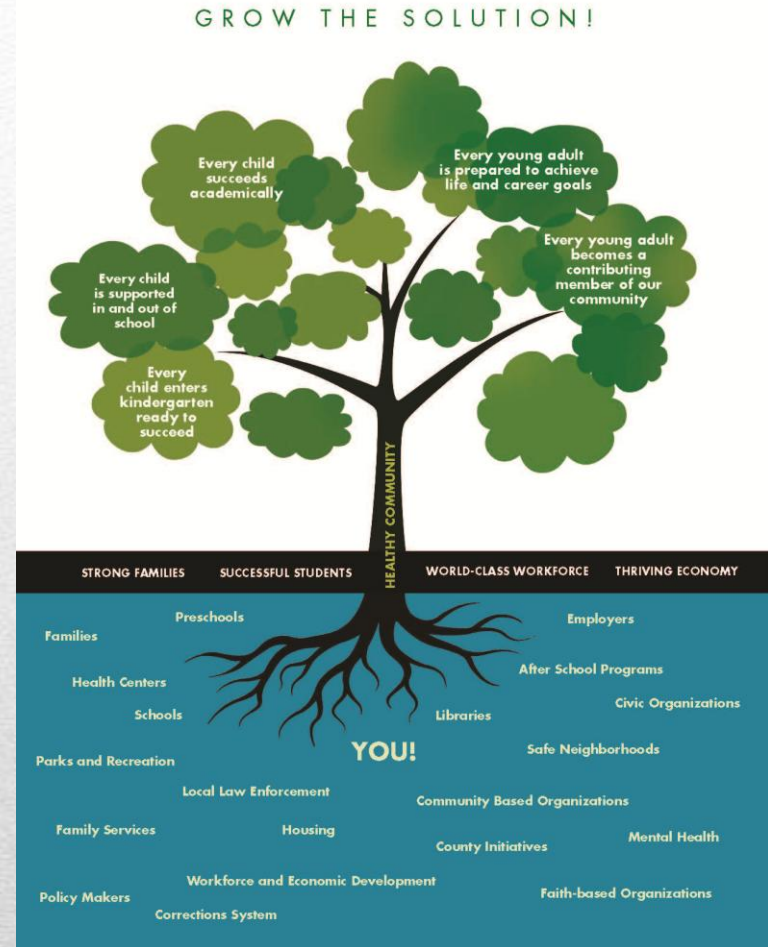
- Facilitate the development of a common agenda, goals and indicators that support the Health Action goals.
- Build commitment to the common agenda: Encourage organizations to align their work to common goals and indicators. Engage parents, families, businesses, local government, and broader community.
- Align funding: Align private and public investments with shared goals, indicators and priority strategies.
- Measure and report results: Compile and transparently report indicator data and progress toward goals. Identify what is working and share best practices throughout the county.

Take action today!

Help us grow the solution and become a champion in your community, school or business. Visit www.C2CSonomaCounty.org for more information about how you can get involved.

EXAMPLE: Cradle to Career

Long-term Goals



EXAMPLE: Cradle to Career

Immediate Goals and Objectives



How do we achieve these goals?

For the five goals for Cradle to Career, **evidence-based** recommendations to address the leading barriers to educational attainment and workforce development are presented below. The recommendations align with the Health Action goals.

Goal 1:

Every child enters kindergarten ready to succeed

- 1.1 Improve health and healthy development of children
- 1.2 Provide resources and support for families and caregivers to support literacy and parenting capacity
- 1.3 Improve quality and availability of early care and education

Goal 2:

Every child succeeds academically

- 2.1 Make curricula more hands-on, relevant, and engaging
- 2.2 Provide academic and social support, especially during key transition years (elementary school to middle school, middle school to high school, high school to postsecondary)
- 2.3 Develop and use early warning data systems to prevent failure and help at-risk students
- 2.4 Enhance professional development to build effective teaching skills
- 2.5 Re-engage dropouts in school

Goal 3:

Every child is supported in and out of school

- 3.1 Improve early grade reading proficiency
- 3.2 Increase family involvement and connections
- 3.3 Align school and out-of-school time (OST) programs to reinforce and enhance learning
- 3.4 Engage and mobilize community to create safe environments, support families, and promote youth achievement
- 3.5 Connect youth to extra-curricular and volunteer activities that contribute to the community

Goal 4:

Every young adult is prepared to achieve their life and career goals

- 4.1 Promote better coordination and alignment between the Pre K-12 and postsecondary education systems
- 4.2 Help students begin to connect to careers and develop career-ready skills (linked to Objective 5.2)
- 4.3 Help students plan for, access, and pay for college or other postsecondary training
- 4.4 Provide support to help students succeed in college or other postsecondary training
- 4.5 Provide alternative pathways to graduation and post-secondary training for disconnected youth and those with special needs

Goal 5:

Every young adult thrives and becomes a contributing member of the community

- 5.1 Increase the number of young adults who are work-ready at age 18
- 5.2 Expand training and work-linked learning opportunities for students and youth, beginning with age-appropriate options for secondary students and culminating in paid internships and "education-friendly" job opportunities for postsecondary students (linked to Objective 4.2)
- 5.3 Align training opportunities with identified workforce development needs to assure the skilled and nimble workforce needed to support the Sonoma County economy
- 5.4 Support education, employment and employment training for special needs populations (e.g., older youth, foster youth, probation, disadvantaged, developmentally disabled)
- 5.5 Provide resources and support to increase the financial literacy and stability of young adults and their families

For more information, contact the Department of Health Services at 707-565-6680 or visit www.C2CSonomaCounty.org.



A cross-sector initiative coordinated by the Department of Health Services aligned with the Health Action Framework

EXAMPLE: Cradle to Career

- CENY Project Model – funded by the Administration for Native Americans, SEDS grant program to improve capacity of organizations to serve Native youth in Sonoma, Lake and Mendocino Counties.
 - Subgrants
 - Identification of specific capacity building needs and tailoring task and timelines to address those needs
 - Networking Luncheons
 - Identification of cross-cutting needs that may be addressed with short form workshops and the opportunity to network with other Native Youth serving organizations
 - Asset Map
 - Identification of organizations, resources and events using a GIS mapping tool.
- Successes and Challenges – Funding, capacity and commitment to participate

Sustainability of CENY

- Should CENY be sustained?
- If so, we need a strategy for sustainability.
- What goals and objectives should shape the sustainability strategy?

Sustainability of CENY
